

Model FMD-3200/BB/3300

V.03.11 New CPU Board, Software Upgrade

1. New software

1) Processor unit software (EC-3000)

Boot	2450075-03.11.0010
System	2450076-03.11.0010
Common	2450077-03.11.0010
ECDIS	2450074-03.11.0010-20161207-0
TCS	2450101-03.11.0010-20161207-0
Conning	2450079-03.11.0010-20161207-0
AMS	2450078-03.11.0010-20161207-0

2) Sensor adapter (MC-3000S): Unchanged

C/S BOOTLOADER	2450080-01.06.0000
C/S MAIN	2450081-03.03.0001
C/S MAINTENANCE	2450082-01.16.0000
I/O MAIN	2450084-01.04.0000

3) Sensor adapter (MC-3010A/3020D/3030D): Unchanged

MC I/O Main	2450084-01.04
-------------	---------------

4) Control unit (RCU-024/025/26): Unchanged

Main	2450086-01.05
------	---------------

Revised Manuals

Revised Operator's Manual: OME-44730-H

Operator's Guide: OSE-44730-H

Revised Setting and Adjustment Instruction Manual: E42-01204-H

2. Changes

New printers: HP-8210/HP-200 MOBILE are compatible.

The color table change of the MU-270W is compatible.

For the Association Info window on the ECDIS display, the indications of [COG/SOG] in the water tracking mode are changed to [CTW/STW].

	TT	AIS
	3	
BRG	1.0 °T	359.8 °T
RNG	1.700 NM	1.707 NM
COG	0.0 °T	270.0 °T
SOG	0.0 kn	0.1 kn
CPA	1.700 NM	1.700 NM
TCPA	81:55	-03:19
BCR	**.*	1.607 NM
BCT	**.**	-03:19

Old software

	TT	AIS
	3	
BRG	1.0 °T	359.8 °T
RNG	1.700 NM	1.707 NM
CTW	0.0 °T	270.0 °T
STW	0.0 kn	0.1 kn
CPA	1.700 NM	1.700 NM
TCPA	81:55	-03:19
BCR	**.*	1.607 NM
BCT	**.**	-03:19

New software

The [Datum] selection on the [TT/AIS] tab of the [Overlay/NAV Tools] box complies with DNV.

- The [Datum:] label is added.
- When [ANT] is selected, it is indicated in yellow.

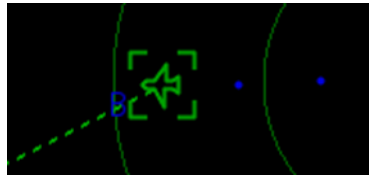
TT	AIS
OFF	FUNC OFF
Vector	6min REL
CPA/TCPA	OFF
AIS CPA	OFF
Lost TGT	OFF
Past POSN	OFF REL
<input type="checkbox"/> SYNC. ANT	
TT Source: ANT_1	CCRP

Old software

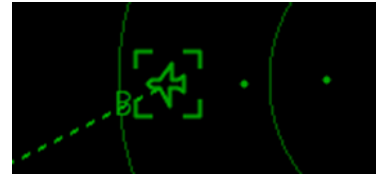
TT	AIS
FILT OFF	FILT OFF
Vector	3min REL
CPA/TCPA	OFF
AIS CPA	OFF
Lost TGT	OFF
Past POSN	OFF REL
TT Source: RA0201	
<input type="checkbox"/> SYNC. ANT	Datum: ANT

New software

On the RADAR Control display, the color of the symbol and tracked point of AIS SAR aircrafts is unified.



Old software



New software

The HDG integrity check excludes COG of SPEED LOG.

Other Sensor		Filter Status		
Sensor	Data	Status	Integrity	Comparisons
HE0001	HDG	Selected	Passed	VD0001(P)
HE0001	ROT	Selected	Doubtful	
VD0001	SOG/COG	Selected	Doubtful	
VD0001	STW/CTW	Selected	Doubtful	

HE0001 Unselect Reset Filter Close Save

Old software

Other Sensor		Filter Status		
Sensor	Data	Status	Integrity	Comparisons
HE0001	HDG	Selected	Doubtful	
HE0001	ROT	Selected	Doubtful	
VD0001	SOG/COG	Selected	Doubtful	
VD0001	STW/CTW	Selected	Doubtful	

HE0001 Unselect Reset Filter Close Save

New software

In the CONNING/AMS mode, the FMD is compatible with the control unit of the full keyboard (special keys).